

**Dear EBAC Friends and Supporters,**

It is with great regret that I announce that Executive Director Susan Corlett has resigned to take on new challenges. For the past eight years, first as development director then as executive director, Susan has shared her energy, intelligence, compassion, and humor, and has made us all-the-more inspired and committed.

Susan's contribution has been enormous. Though the past few years have been difficult for everyone, arguably community-based nonprofits have been hit hardest. It is a challenge to meet the increasing community needs with shrinking funding. But Susan managed to accomplish just that and made EBAC stronger in the process. Susan's leadership has made EBAC financially strong, more efficient, and larger in scope. She diversified funding sources, acquired the TNS building, forged new partnerships with groups like the Oakland Raiders, and created a strategic vision for 21<sup>st</sup> century. And Susan did all this with sensitivity and grace, optimism and hope.

Most of Susan's professional life has been in fundraising/development (with EBAC as well as with the Sierra Club), so I was not entirely surprised to hear that she decided to return to her professional love. She remains a proud EBAC supporter and friend, and I expect we'll all see her often at our events.

On behalf of the board and staff of EBAC, I wish Susan best wishes and personal joy in the years ahead.

Bette McKenzie, Board President

**"I am very sad to be leaving. I have found my time as executive director extremely rewarding. One of the greatest pleasures of my eight years at EBAC has been to work with such a dedicated, talented and caring group of staff members. We have been a great team, and it has been an honor to lead them. EBAC is a great organization, and I am proud of our nine top-notch programs are highly regarded in the community. I will miss the families we serve, our outstanding staff, and our super board."**

- Susan Corlett



**Board of Directors**

Bette McKenzie  
President  
John Burgess  
Vice President Finance and Administration  
Linda Payne  
Vice President Finance and Recording Secretary  
Marlis Branaka  
Vice President Development  
Sybil Hyppolyte  
Vice President Development  
Wendy Silvani  
Vice President Governance  
Anne Bodel  
Assistant Recording Secretary

Alice Akawie  
Jennifer Brandenburg  
Gary Meyer  
Robert A. Plummer  
Gary Robinson  
David Sanborn  
Christine Scrivani  
Lori Wensley, Ph.D.  
Ted Westphal

**ADVISORY BOARD**  
Ted Lyman  
Helen Mendel, C.M.D.  
Tony Paap  
Fritz Sparks  
Shelly Symonds  
Roger Thompson  
Natalie Van Tassel  
Alba Witkin

Brenda Lynch  
Interim Executive Director

**SENIOR STAFF**  
Micheline Beam, Ph.D.  
Director of Clinical Services

Kulwant Ashanta,  
Director of Finance, MIS, and Operations

Brenda Lynch,  
Director of Development  
Beth McCarty, Director of School and Community Services  
Sharly M. Walker, D.M.,  
Director of Human Resources

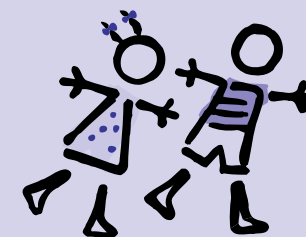
*Perspectives* is the official newsletter of East Bay Agency for Children.

**Writer/Editors:** Brenda Lynch, Taylor Brady, Julio Mota, Teasha Gable

**Design:** SF Art Department



**East Bay Agency for Children (EBAC)** is dedicated to bringing health, hope and opportunity to more than 15,000 children and families in Alameda County each year. Our programs provide therapeutic support for children who have suffered from abuse and neglect, prepare children to succeed in school, and help to strengthen families and communities.



**Specialized Therapeutic and Educational Services**

EBAC works at four program sites in Oakland and Fremont to heal and educate children who suffer from serious emotional disturbances. These programs combine counseling and mental health services with a full day school curriculum.



**School and Community-Based Services**

These programs provide comprehensive and coordinated services to children and families. Working through schools and community organizations, they promote school success and help to build stronger, safer families and communities.

To find out more about EBAC's programs, please visit our website at [www.ebac.org](http://www.ebac.org)

East Bay Agency for Children (EBAC)  
Administrative Offices  
303 Van Buren Avenue  
Oakland, CA 94610  
510/268-3770

**Perspectives**

**Partnering in Community; Partnering for Success**



**Beth McCarty, EBAC director of school & community programs (l); Judy Jorgensen, JLSF president; Mary Rockman, JLSF community programs council director; Allison Delgado, Sequoia Family Resource Center program director (r).**

If you want to know what real community engagement is like, listen to what the Junior League of San Francisco (JLSF) has been doing for Oakland elementary school kids. For six years, JLSF members have volunteered at EBAC's Hawthorne Family Resource Center (HFRC) at the Hawthorne Elementary School in Oakland. With nearly 1000 students, Hawthorne is one of the largest elementary schools in Northern California, and JLSF volunteers have made an impact on every student there.

The Junior League of San Francisco funds six to ten charitable programs each year and has been a major financial sponsor of HFRC family support programs. More importantly though, Junior League members are committed to getting involved personally. HFRC has been fortunate to have

10-15 JLSF volunteers each year, many of whom come back year after year. The volunteers are mostly from the East Bay, but come from all over the Bay Area, and volunteer up to forty hours per year.

Junior League volunteers have been instrumental in HFRC's most popular events. During Halloween Costume and

Continued on page 4

**"The partnership between EBAC and the Junior League of San Francisco has been one of true collaboration," said Judy Jorgensen, JLSF President. "EBAC understands the value that the Junior League brings - both in terms of trained and committed volunteers who can get down to business, as well as the financial support we provide for community programs. We could not ask for a better partner: EBAC has been open to possibilities of new ways in working together, they have been flexible and proactive. The JLSF is proud of the innovative and effective programs and events we've helped develop for the Hawthorne School and the Family Resource Center over the years: from bilingual workshops that give parents the tools to help their families in important areas such as housing and managing family finances, to computer skills for parents, Saturday family activities, an annual coat drive, and excursions to the Parkway Theater in Oakland. And the involvement of the Junior League with EBAC has often gone beyond the committee of dedicated volunteers who work regularly with the program. For the annual gift drive, the whole League got involved, pitched in, brought toys and wrapped them so that all the children would have a present during the winter holiday season. This year, the JLSF is excited to expand our partnership with EBAC by bringing this same level of commitment and support to the Sequoia Healthy Start program as we continue our focus on enriching education for children K-12."**

**Partnering in Community; Partnering for Success**

Continued from page 1

Spooky Stories, kids and volunteers have fun dressing up and sharing ghost stories. On Valentine's Day, volunteers help the students make cards, write poems, and decorate cookies.

The volunteers participate in a Piñata making workshop to celebrate cultural diversity. JLSF sponsors several field trips including to theater performances and to the Chabot Space and Science Center, where 4<sup>th</sup> and 5<sup>th</sup> graders learn about rockets and astronomy. JLSF also inaugurated the school-wide Perfect Attendance program, honoring and rewarding about 10 percent of Hawthorne students with perfect attendance. And the JLSF sponsors a visit from the Oakland Zoo's Zoomobile, prompting one student to ask, "Can snakes smell nachos?"

If you ask the students, however, which is the most notable event, they will without a doubt answer the Winter Gift Drive. For a third December in a row, the JLSF collected monetary and in-kind donations to provide each of Hawthorne's 1000 students with a winter gift in

recognition of hard work in the classroom. An important relationship with the Raiders' Wives Organization (RWO) was established by a JLSF member last year, and the RWO contributed \$1,500. And if that weren't enough, Junior League volunteers wrapped and labeled each gift according to grade and gender and helped distribute them. JLSF volunteers make this the single most exciting day of the year for every student at Hawthorne, and for most of the teachers and staff as well. In a thank-you card, one student wrote, "Thank you for the Scrabble game, I will always play and take care of it."

Jamie Lopez, HFRC program director, sums up JLSF philosophy by saying, "What makes the Junior League of San Francisco unique is that they try to understand and meet the needs of the community, not just pursue their own agenda. They listen and then they act." Jamie is sad to say goodbye to the Junior League of San Francisco after six years, but EBAC is delighted to welcome them to our Sequoia Family Resource Center in Oakland's Diamond district.

The JLSF is "an organization of women committed to promoting voluntarism, developing the potential of women, and improving communities through the effective action and leadership of trained volunteers. In collaboration with other community groups and/or the public sector, the JLSF designs and launches a program, then works to achieve community impact and measurable results. In 2002, JLSF members voted to concentrate their community work through this decade in the area of Education K-12."

# The Heart of Our Celebration

Can you think of a better way to celebrate a fantastic year than by stepping out with some friends, swing-dancing to big band jazz, and bidding on exciting gifts, trips and jewelry, all while helping out one of the East Bay's premier child welfare agencies? We couldn't, so our 8<sup>th</sup> Annual Heart of the Matter Gala, held at the



**Fremont Healthy Start (FHS) staff: Ofelia Gamboa, Family Outreach Worker, Susan Shih, PALS Clinician, Shahla Arsala, Family Outreach Specialist and Giselle Vieta, Program Director.**

Montclair Women's Cultural Arts Club on May 21<sup>st</sup>, was just that.

About two hundred guests, supporters, and friends listened to the Montclair Women's Big Band throughout the evening while bidding on silent auction items, dining, and chatting with friends, old and new. Later in the evening, long-time EBAC friend and former board member, Ted Lyman was auctioneer, driving up the bidding on a half dozen premium items including a week in Paris' Left Bank, a VIP trip to Macy's Thanksgiving Day Parade in

stylish Bajaj Scooter, and a gourmet dinner and wine pairing (hosted by EBAC supporters Shelly Symonds and Aaron Moore). Proceeds from the silent and live auction exceeded expectations by almost double, and all went to supporting EBAC's work helping East Bay children overcome adversity to succeed at school.

At the heart of our celebration was acknowledging our 2004 Community Partner Award winner. Our gracious Master of Ceremonies, KTVU-TV anchor Mark Curtis, presented this year's award to Shahla Arsala. For twelve years as part of *Fremont Healthy Start*, Shahla has been dedicated to improving the health and educational success of Fremont children and families. Shahla is also a founder of the *Afghan Widow's Project*, based in Fremont.

The *Afghan Widow's Project* builds relationships between Americans, often Afghan expatriates, and widowed Afghan women refugees in Pakistan. The American partners send letters of encouragement, school supplies for children, and small amounts of money. In doing so, the *Afghan Widow's Project* contributes to the survival of some of the most isolated and destitute people on earth.

Shahla Arsala is a model of effective community building. EBAC is extremely proud of Shahla's accomplishments to make our world a better place, and we are honored to have her as part of our team at *Fremont Healthy Start*. In addition to being honored as EBAC's 2004 Community Partner, Shahla received commendations from Assemblywoman Wilma Chan and Congresswoman Barbara Lee.

"I lost my husband to cancer. I live in a country that has everything, but I still struggled. The widows back in Afghanistan, they worry about feeding their children from morning to evening. If they feed them in the morning, they worry about the evening. If we are kind to others and become good people in this world, perhaps we would have peace."

We couldn't agree more.



**Montclair Women's Big Band.**



**Brenda Lynch, EBAC interim executive director; Shahla Arsala, EBAC 2004 Community Partner; Bette McKenzie, EBAC board president.**

*"I am writing to express my deepest appreciation for honoring me and my work. It was beyond my wildest dreams, I can't think of anything as beautiful, touching and memorable for the recognition of my life's work, and I owe most of this to East Bay Agency for Children. For these past 12 years, East Bay Agency for Children has shown great support, guidance and leadership, through which I have grown personally and professionally. I know for sure that I wouldn't have been able to do all these things for which you honored me without being first a member of the East Bay Agency for Children family. I feel lucky and proud to be working for an organization whose mission for the last 52 years is empowering families, children and the underserved immigrant communities. I want you to know that I felt the honor through my bones. I also want to wish the best for the people in our community whom I serve and that through serving them I have learned about my capabilities of reaching out to less fortunate people and be able to get the recognition. I am hoping that I will continue to be a pro-active and proud East Bay Agency for Children member."*

**Shahla Arsala**



## Special EBAC Thanks To:

Á Coté  
Bajaj Scooter  
BayWolf Restaurant  
Ben Benson's  
Steakhouse  
Bill & Marilyn Weber  
Body Time  
Chronicle Books  
Claremont Hotel & Spa  
Debbie Tavella  
Diablo Magazine  
Frank & Alice Fried  
Garibaldi's Restaurant  
Grasshopper  
Harry Lewis  
Jennifer Gibbs  
Julius Young  
Junior League of San Francisco  
La Farine French Bakery  
La Mediterranée  
Linda Stern  
Mayacamas Vineyards

Mark Curtis/KTVU  
Murasaki Futon Shop  
Northstar Tahoe  
Oliveto Café &  
Restaurant  
Ovation Clothing  
Pegasus & Pendragon  
Books  
Peter Becker  
Piedmont Grocery  
Rockridge Café  
Saul Zaentz  
Shamwari Gallery  
Stanford Football  
Stanford Inn by the Sea  
Steve Grant  
The Pasta Shop  
Tippett Studios  
Trader Vic's  
TranSports  
Trefethen Vineyards  
Virgil and Jane Williams

Give Something Back  
BUSINESS PRODUCTS

macy's

Chevron  
chevron

La Piana  
ASSOCIATES, INC.

WELLS  
FARGO

PROVIDIAN

THE  
WINDMILL

THE  
WINDMILL

Farmington Services  
EST. 1988

SAFEMAN

THE  
WINDMILL

Webcor Construction

Paul and Marcy Nathan